

MINI1

MOST PRACTICAL HANDY OTDR

- 5" Touch Screen with Smart GUI
- 8GB Internal Storage with Internal SD Card & External USB Memory
- Built-In VFL and Light Source
- Fast Booting Time
- Lightweight and Handheld



BELIEVE
YOUR
EYES.

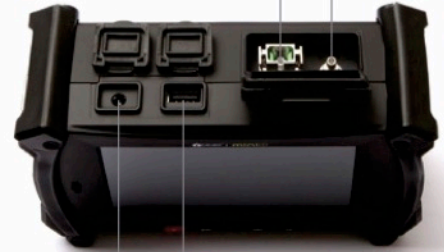
DESCRIPTION

MINI1, INNO Instrument's handy OTDR, has most practical functions within small body supporting accurate and fast test results. MINI1 OTDR boasts fast response time, capacitive touch screen, user-friendly GUI and automatic test reporting. We guarantee that you can easily and quickly test your networks with this small but smart gear.

CHARACTERISTICS

1
WARRANTY
YEAR

Optical Connector VFL



DC USB

Identify Fiber Fault Location



Measure Fiber Optical Link



Magnify the
Fiber End Face



5" Touch Screen with
Smart GUI
High Brightness
Resolution of 800x480



Fast Booting Time

touch



MINI1

OTDR



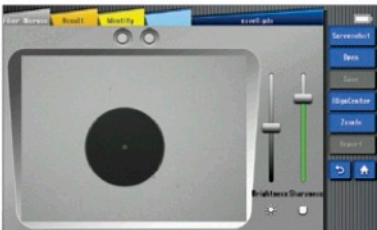
OTDR mode allows for measuring distance, loss, reflectivity, attenuation and accumulation loss on a fiber optical link.

VFL



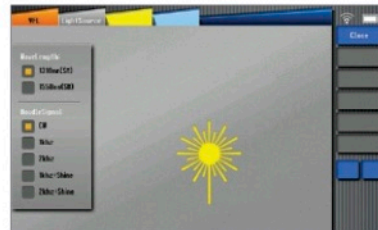
VFL allows for finding direct fault locations in fiber test dead zones or performing fiber core calibration in multi-fiber cables.

FIBER MICROSCOPE



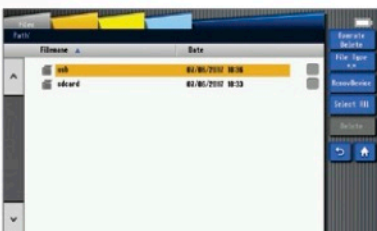
Fiber end tester (peripheral required) is mainly used to test the cleanliness and flatness of the fiber end face.

LIGHT SOURCE



Invisible light source (1310 or 1550nm) can provide the following types of light, including CW light, 1kHz light, 2kHz light, 1kHz blink light, 2kHz blink light.

FILE MANAGER



File Manger can provide powerful file management that users can manage their files conveniently.

TECHNICAL SPECIFICATIONS

| | |
|---------------------------|--|
| Model | MINI1 |
| Display | 5 inches, High Brightness TFT LCD, resolution of 800x480 |
| Distance unit | m / km / mile / ft |
| Dynamic range | 25dB / 25dB (1310nm / 1550nm) |
| Measurement range (km) | 1.3, 2.5, 5, 10, 20, 40, 80, 120, 160, 260km |
| Measurement range (mile) | 0.81, 1.55, 3.11, 6.22, 12.4, 24.8, 49.6, 74.6, 99.4, 161.5mile |
| Pulse width | 5ns, 10ns, 20ns, 50ns, 100ns, 200ns, 500ns, 1μs, 2μs, 10μs, 20μs |
| Dead zone (Event/Attn.) | 1m / 5m |
| Distance accuracy | ±(1m+Distance×2.5×10 ⁻⁵ +Sampling resolution) |
| Linearity | 0.03dB |
| Sampling points | 110,000 points |
| Refractive index | 1.000000 - 2.000000 (step: 0.000001) |
| Resolution | 0.04m ~ 10.24m |
| Loss readout resolution | 0.001dB |
| Battery capacity | Operating Time : Up to 8hours / Stand by Time: Up to 14 hours |
| File format | SOR, BMP, JPG, GDM, SOLA, PDF |
| External connection | USB 2.0 |
| Compatible connector | APC(FC, SC, LC), UPC(FC, SC, LC, ST) |
| Power supply | AC Input 100-240V, 50-60Hz / DC Input 19V, 3.42A |
| VFL port | 2.5mm ferrule type |
| VFL wavelength | 650nm ±10nm |
| VFL distance | Up to 10km |
| VFL output power | 20mW |
| Light source | Operating wavelength: 1310nm / 1550nm ±10nm |
| Light source output power | -5dBm |

PACKAGE

| | |
|----------------------------|--------------------|
| OTDR | MINI1 |
| Power cable / AC Adapter | ACC-25 / JS-180300 |
| Carrying case | Soft case |
| Shoulder strap / Touch pen | ✓ |
| Calibration certificate | ✓ |

GENERAL SPECIFICATIONS

| | |
|----------------------|---|
| Dimension | 4.52H x 6.81W x 2.51D inches (115H x 173W x 64D mm, excluding rubber bumper) |
| Weight | 1.98pounds (0.90kg with battery) |
| Operating conditions | -10~50°C |
| Storage conditions | -20~60°C. |
| Relative humidity | 0~95% (Noncondensing) |



*The information on this catalog is subject to change without prior notice.

Marketed & Supported By:



Registered Office

CANLITEK SOLUTIONS PVT. LTD.

No.125-B, 2nd Floor, MTH Road, Krishnapuram, Ambattur, Chennai - 600 053.

✉ info@canlitek.com ☎ 8072170526 🌐 www.canlitek.com | www.canli.in